



For a Better Tomorrow
AISIN GROUP



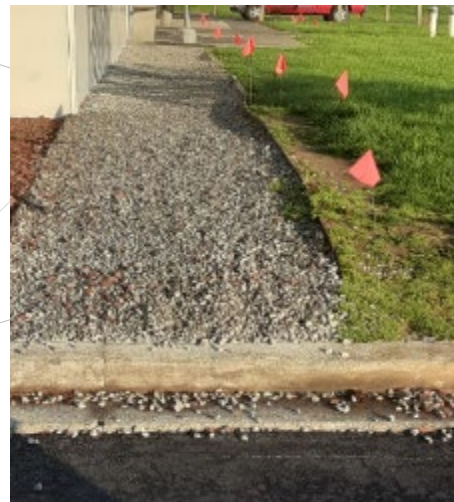
AAC TEMPORARY TRAVEL PATTERNS



TOOLS TO AIDE IN SOCIAL DISTANCING DURING TRAVEL AT AAC

Social distancing tools

- Flags to mark 6 foot intervals where painting wasn't possible
- Cones and chain placed to guide foot traffic
- Lines painted on heavily used walk areas at 6 foot intervals
- Arrow showing the direction of foot travel
- Do not enter sign and entrance only signs to maintain safe direction of travel



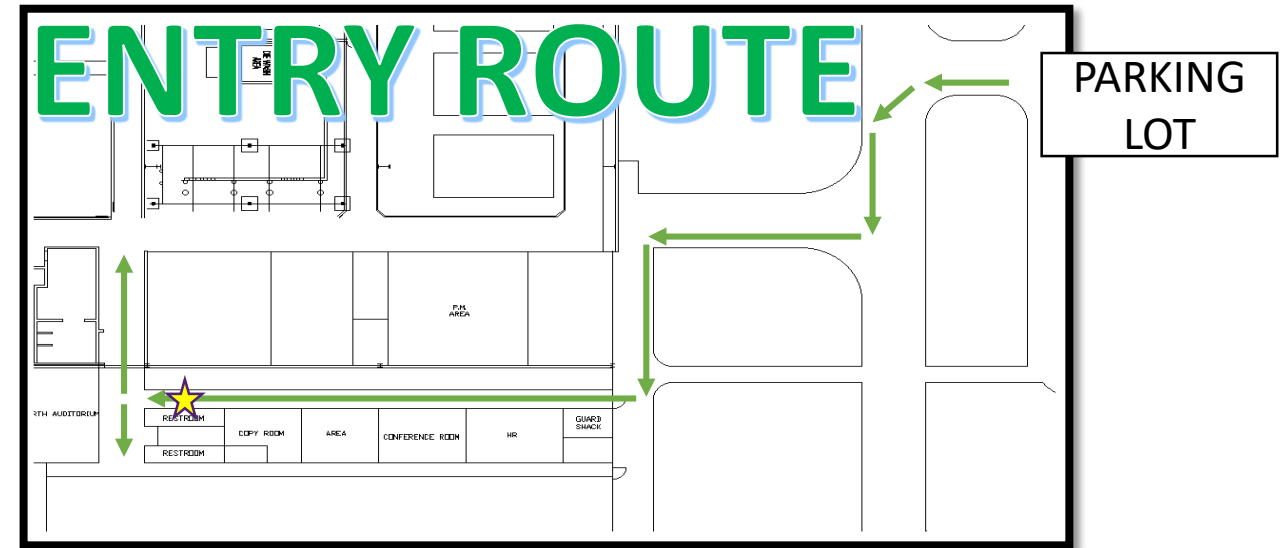
PLANT 1

PLANT ENTRY AND EXIT TRAVEL ROUTES

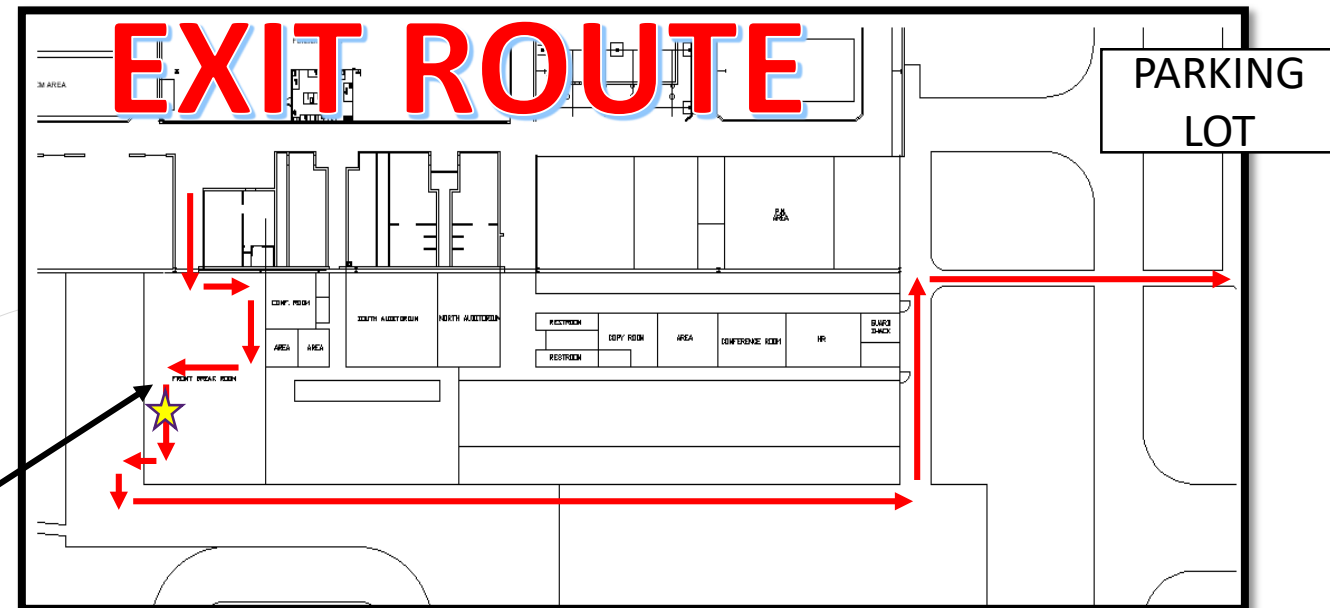
Plant entry/exit travel route rules

- Maintain 6 foot social distance at all times
 - Route spacing lines have been painted along the routes.
- Follow directional arrows from parking lot to entry time clock at the beginning of your shift
- Follow directional arrows from exit time clock to the parking lot at the end of your shift
- Do not deviate from these routes

FRONT BREAK ROOM



★ Time clock locations

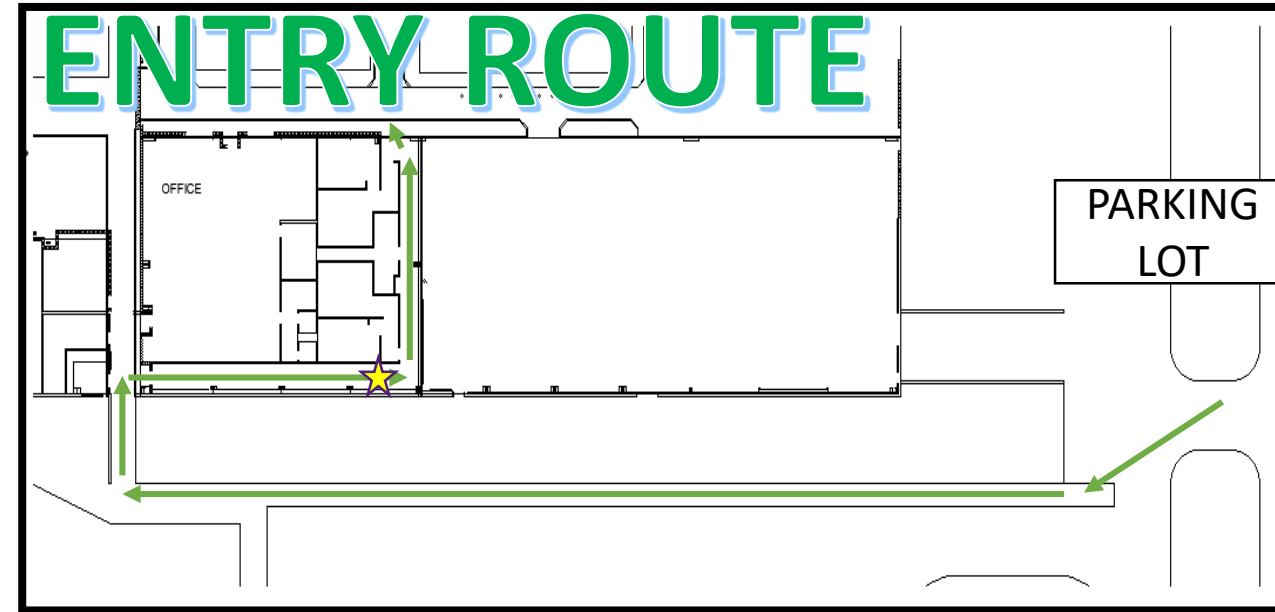


PLANT 2

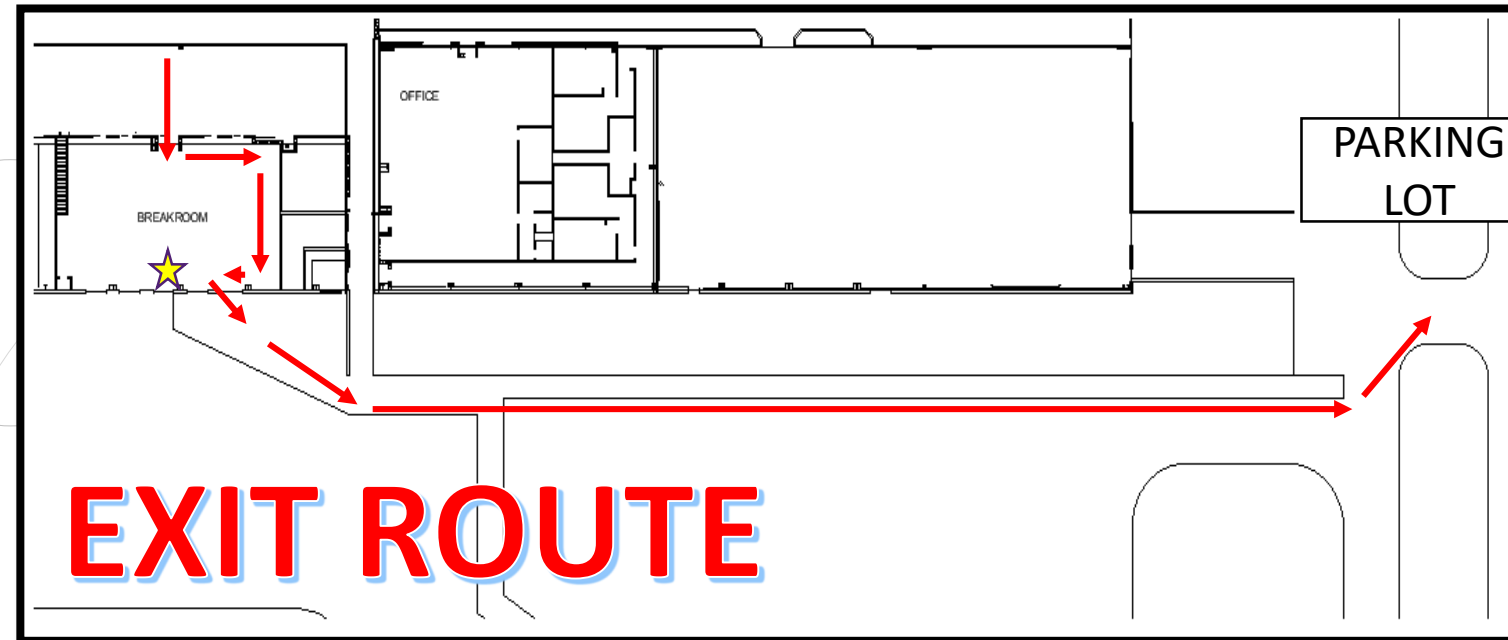
PLANT ENTRY AND EXIT TRAVEL ROUTES

Plant entry/exit travel route rules

- Maintain 6 foot social distance at all times
 - Route spacing lines have been painted along the routes.
- Follow directional arrows from parking lot to entry time clock at the beginning of your shift
- Follow directional arrows from exit time clock to the parking lot at the end of your shift
- Do not deviate from these routes



 Time clock locations

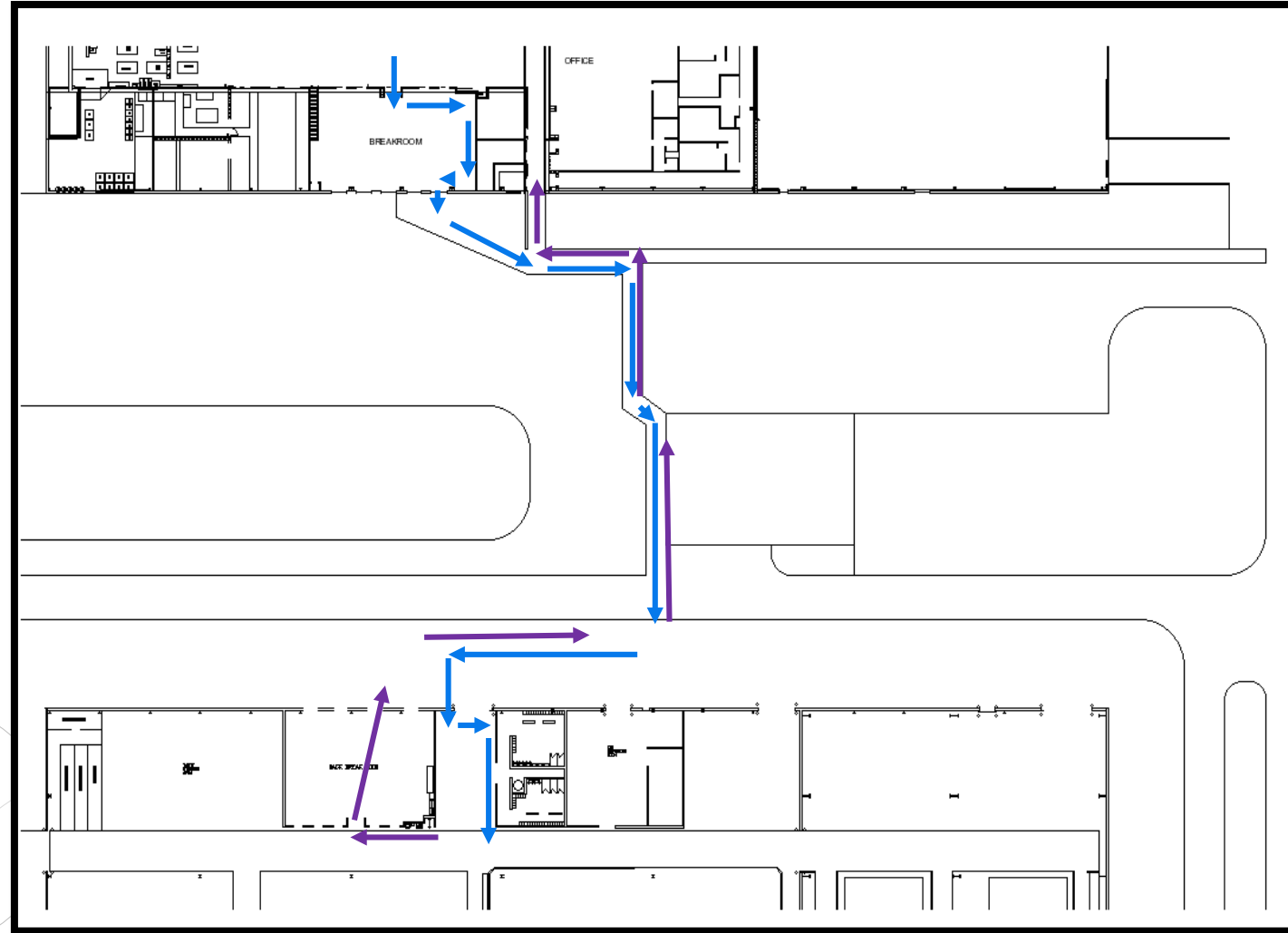


PLANT TO PLANT TRAVEL ROUTES

Breakroom entry/exit route rules

- Maintain 6 foot social distance at all times
 - Route spacing lines have been painted along route.
- Follow directional arrows for entry route to breakroom
- Follow directional arrows for exit route from breakroom
- Do not deviate from these routes

Plant 2



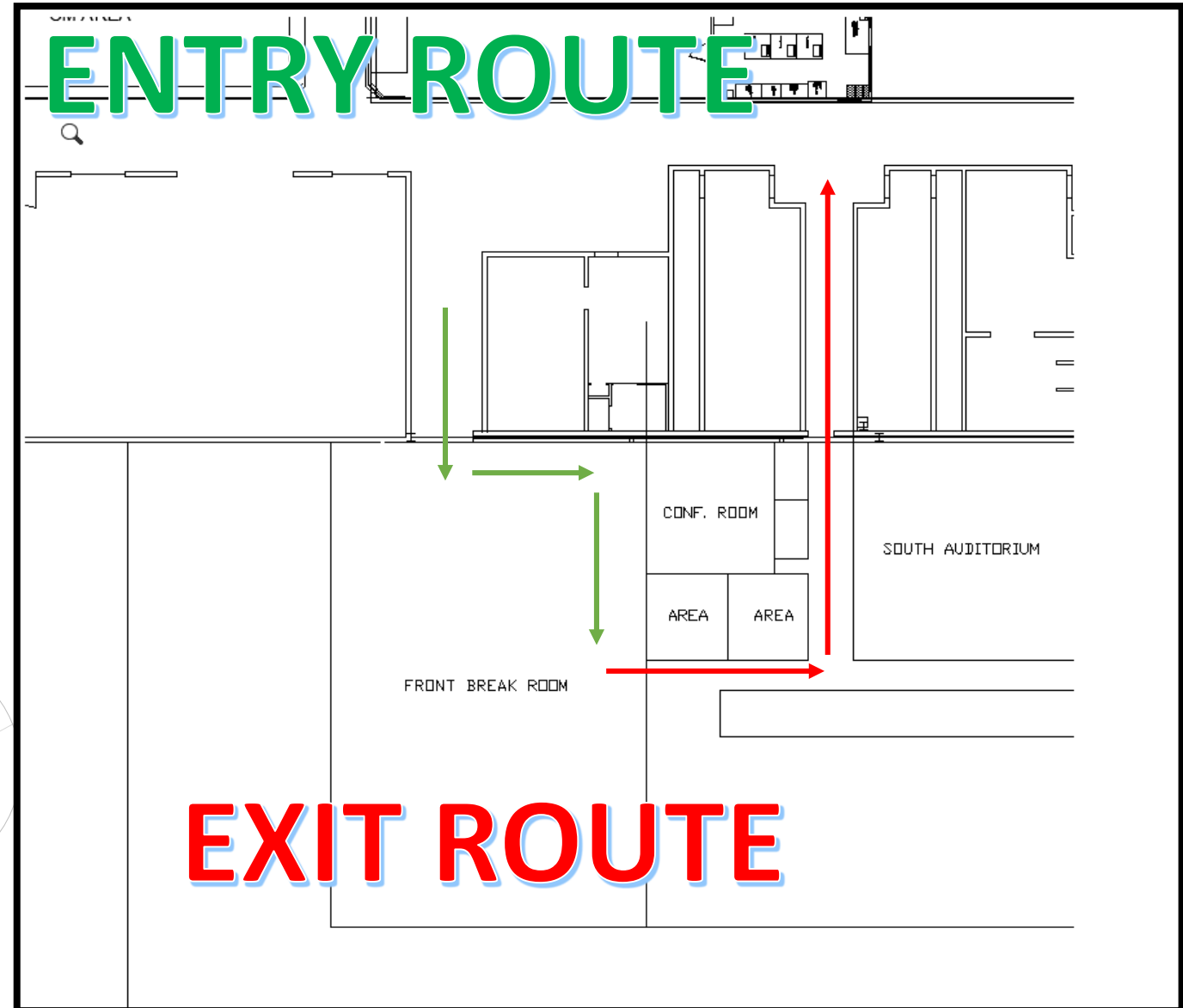
Plant 1

PLANT 1

FRONT BREAK ROOM TRAVEL ROUTES

Breakroom entry/exit route rules

- Maintain 6 foot social distance at all times
 - Route spacing lines have been painted along route.
- Follow directional arrows for entry route to breakroom
- Follow directional arrows for exit route from breakroom
- Do not deviate from these routes



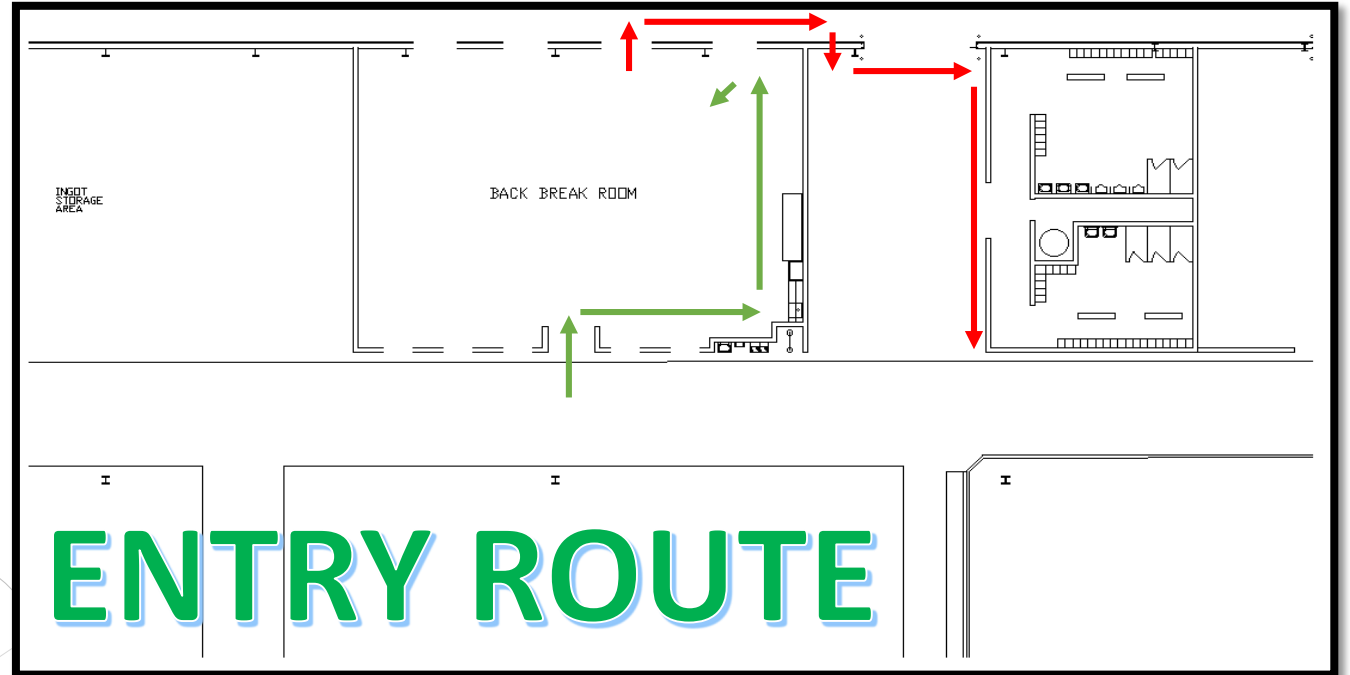
PLANT 1

BACK BREAK ROOM TRAVEL ROUTES

Breakroom entry/exit route rules

- Maintain 6 foot social distance at all times
 - Route spacing lines have been painted along route.
- Follow directional arrows for entry route to breakroom
- Follow directional arrows for exit route from breakroom
- Do not deviate from these routes

EXIT ROUTE

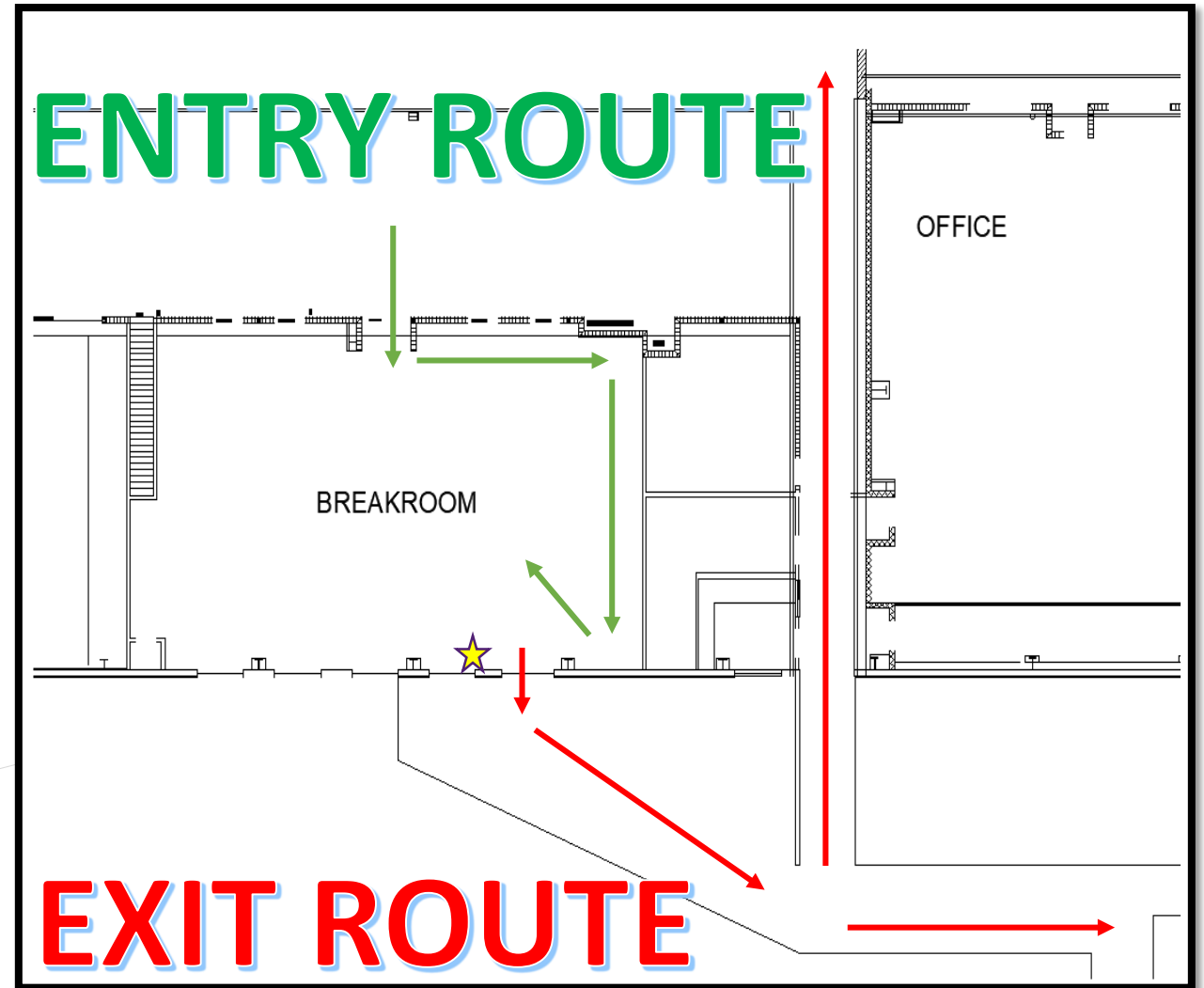


PLANT 2

FRONT BREAK ROOM TRAVEL ROUTES

Breakroom entry/exit route rules

- Maintain 6 foot social distance at all times
 - Route spacing lines have been painted along route.
- Follow directional arrows for entry route to breakroom
- Follow directional arrows for exit route from breakroom
- Do not deviate from these routes

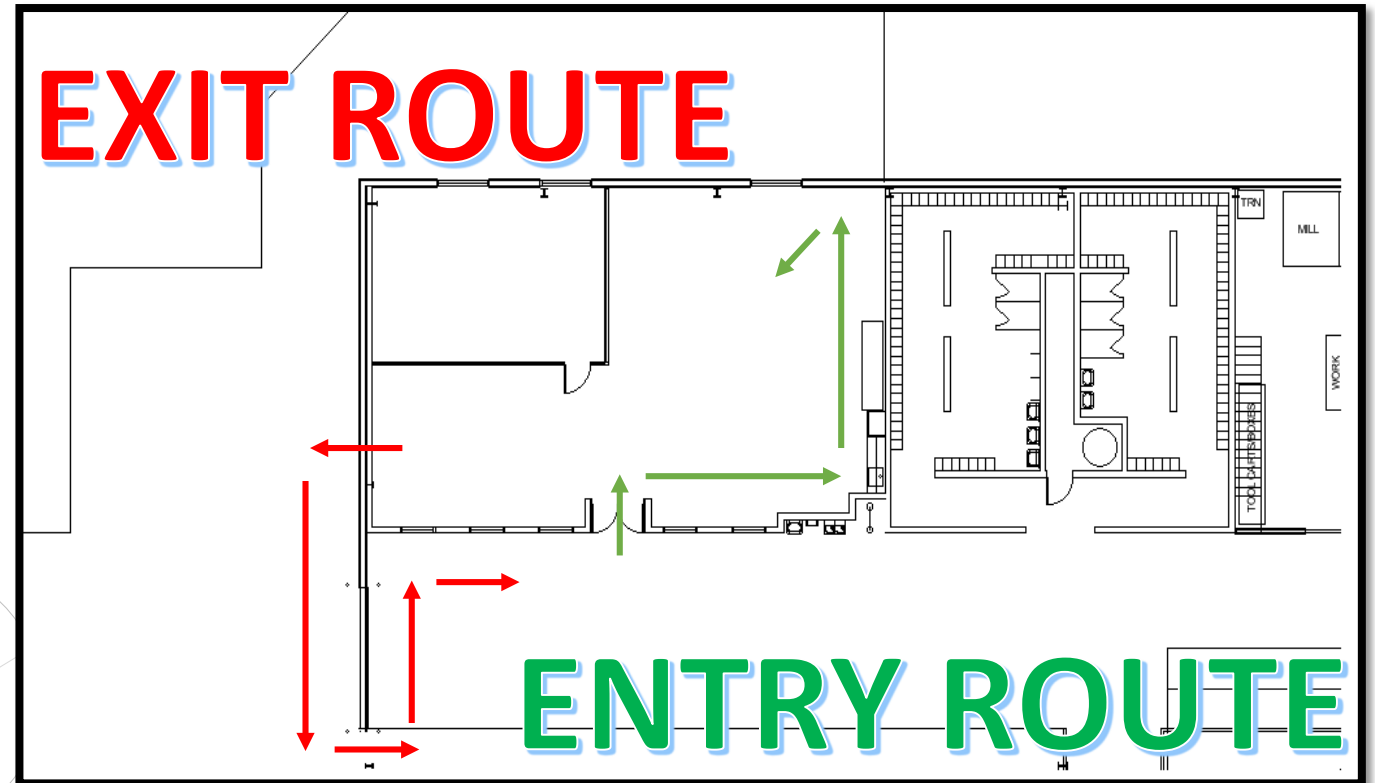


PLANT 2

BACK BREAK ROOM TRAVEL ROUTES

Breakroom entry/exit route rules

- Maintain 6 foot social distance at all times
 - Route spacing lines have been painted along route.
- Follow directional arrows for entry route to breakroom
- Follow directional arrows for exit route from breakroom
- Do not deviate from these routes



BOTH PLANTS

INTERNAL TRAVEL ROUTES

Internal Walkways / Stop Points

- Internal Walkways
 - Walkways cannot be one way traffic within each plant.
 - TM's will need to practice social distancing and keep 6ft separation with all members on each side.
 - We understand that in all cases 6ft separation is not required for quick passing of members.
- Stop Points
 - All marked stop points have taped areas to indicate where TM's will stand while waiting for the member in front of them to get through the stop point. Please do not crowd these areas and keep all social distancing guidelines.

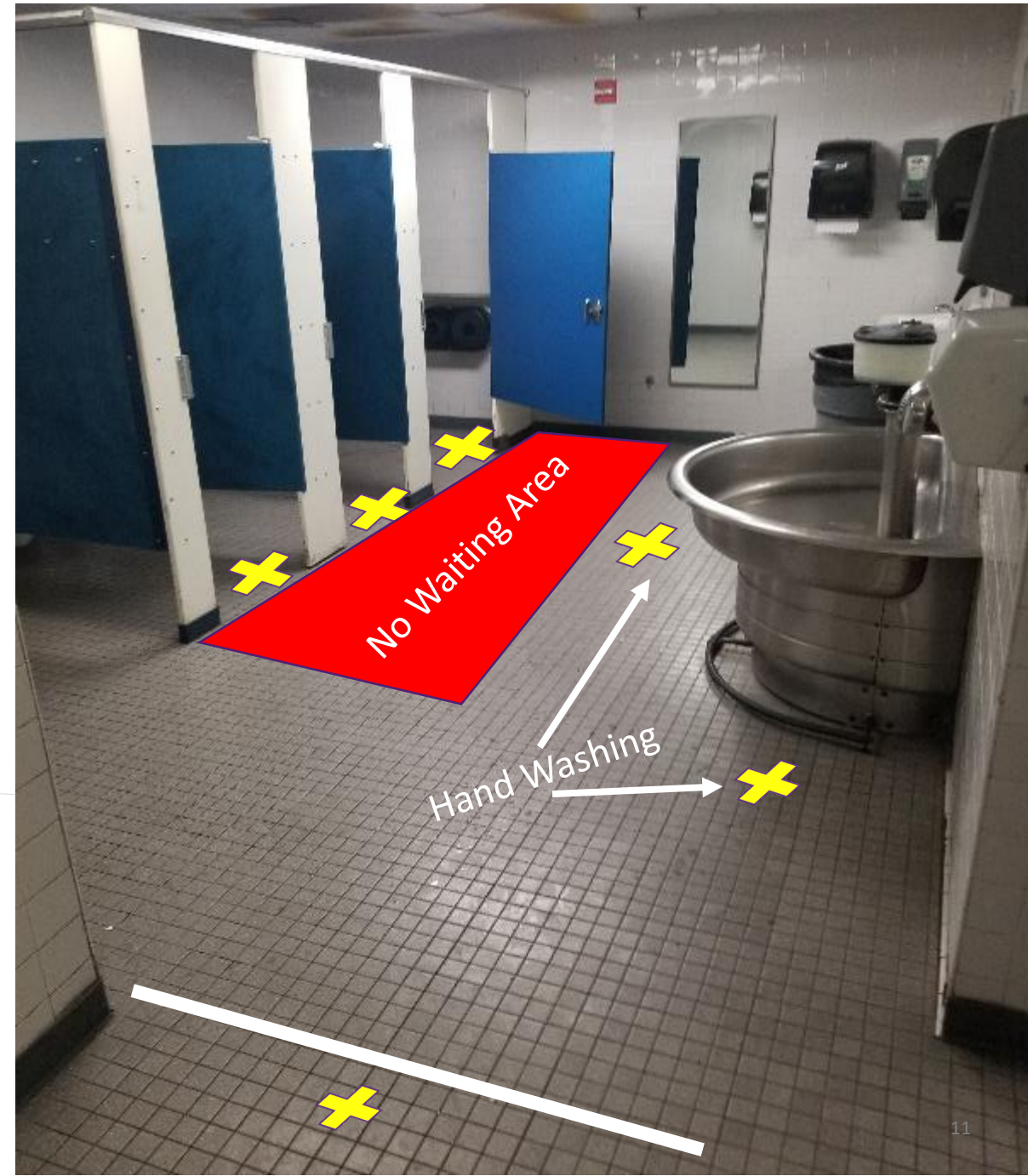


BOTH PLANTS

REST ROOM TRAVEL ROUTES

Rest Room Usage

- Rest Rooms cannot be designed with separate in/out doors.
- Where possible Doors will be removed or will remain open
- If a line is formed please wait while keeping 6ft distance or go to another rest room.
- Please be courteous to other members and wait for them to exit the restroom before you enter.
- Please be as quick as possible some urinals will be closed to keep 6ft separation so space is limited.
- 6ft separation is not required for members using stalls since they have barriers.
- Aisin





For a Better Tomorrow
AISIN GROUP

Together we can reduce the spread and
protect our families



THANK YOU

